

航管監視最低高度圖

ATC Surveillance Minimum Altitude Chart

AD ELEV.
RCFN 143 FT
RCGI 28 FT
RCLY 44 FT

KAOHSIUNG
119.4 228.2

FONGNIAN TWR
118.1
236.6
ATIS 127.0

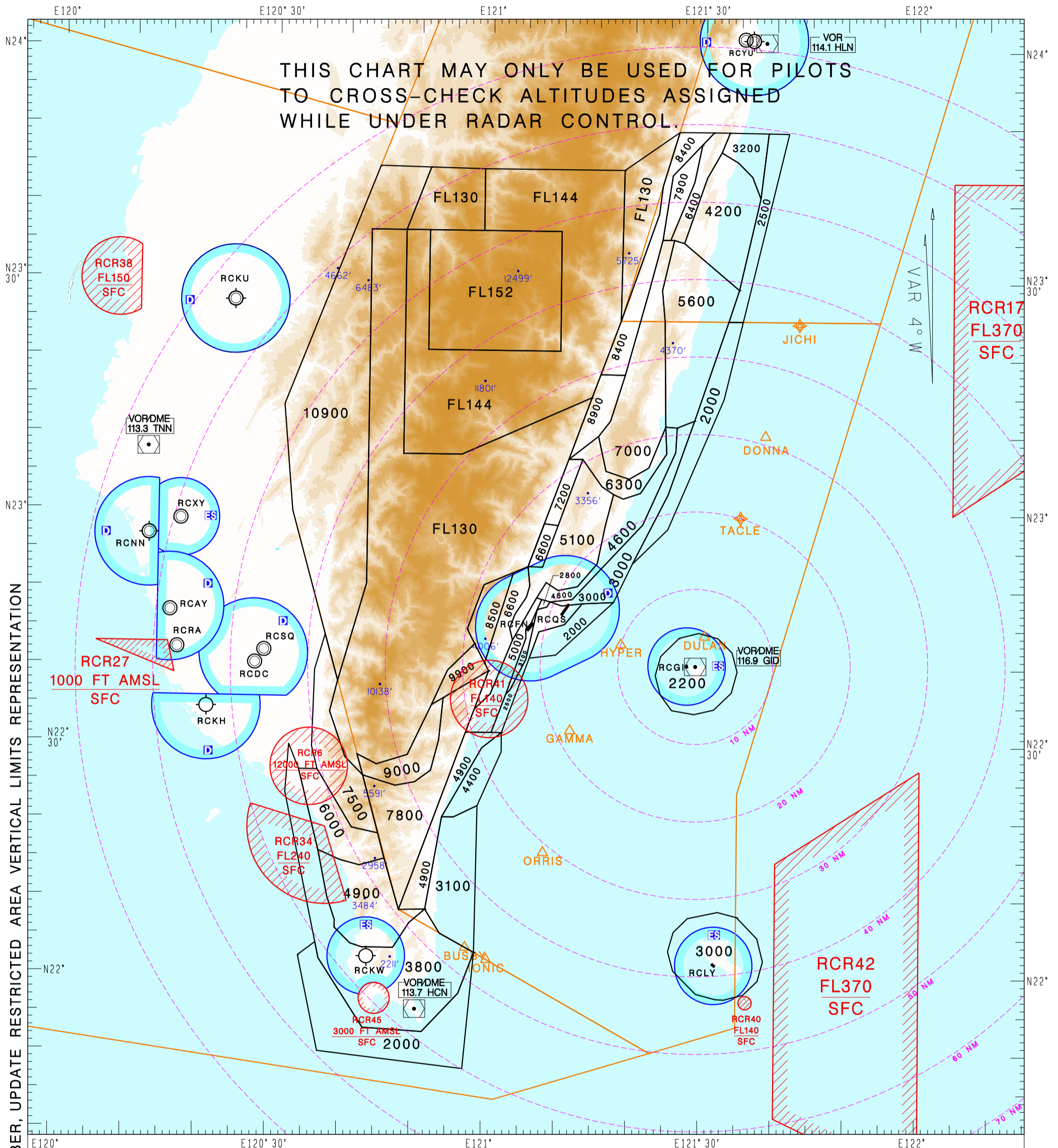
LUDAO TWR
118.8

LANYU TWR
118.5

臺東/豐年機場 Taitung/Fongnian Aerodrome

綠島機場 Ludao Aerodrome

蘭嶼機場 Lanyu Aerodrome



NOTE

1. Range arcs and bearings are centered at GID VOR (224020.5N 1212909.5E).
 2. Minimum altitudes are calculated taking into account of minimum clearance above terrain/obstacles. Radar control service cannot be provided to aircraft below the applicable minimum. However, aircraft at designated altitude in relevant sector is not assured of radar contact.
 3. Altitudes, Levels, Heights are in feet.
 4. Only significant spot heights are shown.
 5. LOSS OF COMMUNICATION
 - a. SQUAWK 7600 immediately, and
 - b. follow AIP ENR 1.6.4 "Radio Communication Failure Procedures."
- Transition level: FL130
Transition altitude: 11,000

Transition level: FL130
Transition altitude: 11,000ft

CHANGES: NEW PAGE NUMBER, UPDATE RESTRICTED AREA VERTICAL LIMITS REPRESENTATION